

hello
life

Brookwood
Oncology Program
Annual Report
2008-2009

DATA ENDING DECEMBER 2008



Oncology Program Overview | 2008-2009

THIS HAS BEEN A REMARKABLE YEAR FOR OUR ONCOLOGY

Program at Brookwood Medical Center because of our outstanding physicians and care givers, specializing in GYN, Surgery, Radiation, Medicine, Pathology and Radiology, as well as our fantastic Nursing care, Dieticians, Chaplains and Therapists. Our patients receive the best care and compassion possible. We continue to dedicate ourselves to the people in our community, striving to exceed their expectation of quality care.

ACKNOWLEDGEMENTS

In the specialty of Hematology/Oncology we welcomed Drs. Yeilding, Ashraf and Bridges as well as Dr. Gopurala. We have had numerous recipients of awards this year. Peggy Darby, RN received the Tenet Hero Award; Ron Finn, RN, also received the Tenet Hero Award as well as Jefferson County Hospital Hero's Award. Sybil High, RN, received the UAB Diane Barnett Compassionate Nursing Leader Award and Cheryl Smith, RN, Director of 7th floor, received Brookwood Nurse Leader of the Year.

On 3 Women's, Christy Nation received Nurse Leader of the Year & the Ida Moffett Courage to Care Award. Mary Burns received Nurse of the Year, and Whitney Williams received the Oncology Nursing Society Award. Also, Susan Naugher, Stacey Dempsey, Janet Dees, Cheryl Smith, Pat Tawbush, and Lynda Leo have all successfully become Oncology Certified Nurses.

This past June, our Oncology Program received a Three Year Certification with Commendation from the American College of Surgeons. Our success was in large part due to the guidance of Judy Smith, RHIA, CTR, and Coordinator of the Tumor Registry, and also to the hard work of Ellen Carmichael, Q.I. Coordinator, Janet Dees, Outreach Coordinator, Dr. Dumas, Tumor Conference Coordinator, Dr. Tincher, Physician Liaison, Dr. Davis, Chairman of Oncology Committee and Dr. Devos, CAPS Coordinator.

CONTINUUM OF CARE

We continue to emphasize Women's Health through our annual Mammothon, GYN lecture, and daily high risk breast screenings. We have renewed a relationship with the



Chairman's Report

THE ONCOLOGY PROGRAM AT BROOKWOOD MEDICAL CENTER had another outstanding year in 2009 providing state of the art treatment to cancer patients in our community. The cumulative numbers from 2008 revealed that 1,168 patients received a new diagnosis at our institution. This number is consistent with previous years and indicates an extremely active cancer program at our hospital. As in previous years the top 5 sites included breast, uterine, colorectal, lung and ovarian cancers. The Cancer Registry continues to do an exemplary job in collecting information on these patients and participates in a National Cancer Database which is required for all accredited programs by the American College of Surgeons Commission on Cancer.

Many exciting events have occurred in our cancer program over the last year. First, in June 2009, our cancer program underwent a survey by the American College of Surgeons Commission on Cancer. I am pleased to report that the College awarded our oncology program a three year accreditation award with commendation. Brookwood Medical Center should take great pride in this recognition because only 40% of all surveyed institutions receive this award on a national level and only 31% are issued this level of accreditation at the state level. Areas of commendation by the American College of Surgeons included outcome analysis, perfect quality of data submitted to the National Cancer Database each year, and a very active outreach program.

Brookwood Medical Center continues to stay committed to its cancer patients by incorporating new technologies and providing the highest quality of care to our patients in a patient centered environment. Currently the oncology floor is undergoing extensive renovation to provide the highest level of comfort to our patients while in the hospital. The CyberKnife program is fully operational. The CyberKnife at Brookwood Medical Center is only one of two in the state and has currently treated more than 70 patients. In addition, the capital package for a new linear accelerator has been approved. The system that is being implemented is Varian iX. This system offers state of the art technology including gating capability, Rapid Arc capability and an onboard imaging system that allows us to capture imaging data digitally. The Varian iX will begin treating patients by the end of 2009.

Community outreach remains an important goal for our program which is illustrated by the American College of Surgeons giving us a commendation award in this area. The cancer program continues to meet this need by including educational programs for elementary schools, senior citizens groups and the work place. Education on prevention and early detection of colon, breast and lung cancer continue to be an essential component of this program.

It is obvious that many exciting things are occurring in our oncology program at Brookwood Medical Center. This is to the credit of many hardworking individuals. However, despite our successes, we must continue to be diligent in providing the highest quality of cancer care to our patients.

J. Christopher Davis, MD, FACS

Chairman, Oncology Performance Improvement Committee



American Cancer Society, reorganizing and improving our support groups, and have welcomed two new Chaplains to Brookwood, Amanda Ducksworth and Mike Lewis. The CyberKnife of Birmingham opened in March, and has been an extraordinary success, allowing the treatment of inoperable tumors utilizing radiation, with sub millimeter accuracy. The 7th Floor is currently being renovated and should be complete by 2010, and the Cancer Center is currently installing a new Varian iX accelerator, with Rapid Arc and gating technology.

Our Oncology program continues to thrive thanks to our dedicated physicians, staff and administrative leadership. We honor our patients by our professional growth and compassionate care. I look forward to another successful year in 2010.

Jenni Fisher, BS, CMD, RT(T)

Manager, Brookwood Cancer Care Center

(Above) Sybil High, RN, Recipient of the UAB Diane Barnett Compassionate Nursing Leader Award. (Left) Ron Finn, RN, and Peggy Darby, RN, Recipients of Tenet Heroes Award (pictured with Garry Gause, President and CEO).

SUMMARY OF CANCER INCIDENCE 2008—At Brookwood Medical Center in 2008, a total of 1,168 analytic cases were seen. This represents a slight decrease over last year when 1,211 patients were seen (see charts and tables at right). The most common presenting diagnosis remains breast cancer with 263 patients. This is stable year over year. The vast majority of patients with breast cancer present with early stage disease with 21% presenting with noninvasive breast cancers, 32% presenting with Stage I and 31% with Stage II. Only 2% of patients are presenting with distant disease representing an increase in early stage disease. Interestingly, a total of 13% of patients elected no active therapy for their cancer. The second most common diagnosis at Brookwood Medical Center was endometrial cancer or cancer of the uterine corpus with a 120 cases. This was slightly diminished from 2007, but, again, overall shows a high level of diagnosis at this institution. Other gynecologic cancers included ovary at 79 cases, vulva at 50 cases and there were 6 cases of vaginal cancer. A total of 23 cases of cervical cancer were diagnosed. Lung cancer represents the fourth most common diagnosis with a total of 85 cases. This is substantially decreased from the prior year when 116 cases were diagnosed. Unfortunately, only 25% of patients presented with Stage I lung cancer and a total of 45% presented with metastatic disease. Colorectal cancer represents the third most common diagnosis. Ovarian cancer now represents the fifth most common diagnosis with prostate cancer no longer showing up in the top five diagnoses at Brookwood Hospital. Comparing the incidence of cancer at this institution to national numbers, an excess of gynecologic cancers remains apparent, again related to local referral patterns to the Women's Care Center.

R. Fred Dumas, Jr., MD | Medical Director, Brookwood Cancer Care Center

Ovarian Cancer

OVARIAN CARCINOMA REPRESENTS AN INSIDIOUS DISEASE

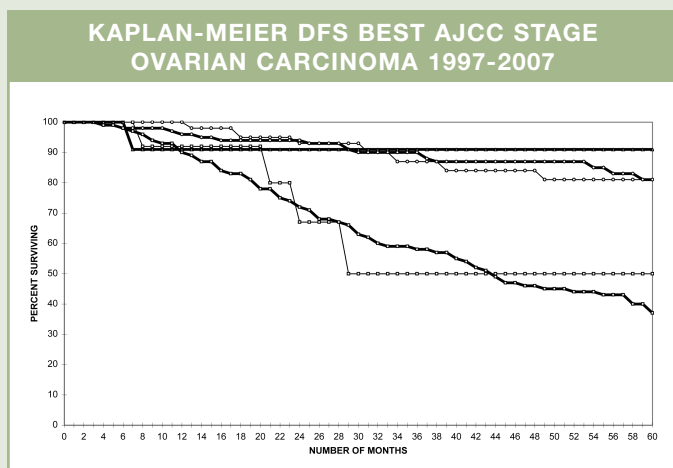
associated with the highest fatality rate of the gynecologic malignancies. Continued advances in surgical therapy and the institution of platinum/paclitaxel based therapy can now produce significant clinical responses in 70% of patients associated with median survival of 36 months. However, largely due to the advanced stage of this solid tumor at presentation, long-term survival remains limited at approximately 20%. In contrast to advanced stage disease, prolonged 5-year survival of 75-95% is often observed in patients with Stage I and II disease when appropriate therapy is received. Significant gains in the long term outcome of patients with ovarian cancer has been observed as modern therapy has advanced. Continued clinical trials of new generation chemotherapeutics and targeted specific biologic agents offers hope for the future.

This study was undertaken to review the experience with ovarian cancer patients treated at Brookwood Hospital from

1997 to 2007. A total of 645 patients were available for review. Consistent with national demographics 70% of our patient population was between the ages of 50 and 80. The practice of Gynecologic Oncology at Brookwood Hospital represents a regional referral center and, as such, while 27% of patients were referred from the Jefferson/Shelby county area 53 other Alabama counties were represented and 48 patients came from a state other than Alabama for their care.

Ovarian cancer is an insidious disease and a majority of patients will present with loco-regional or distant metastasis, widely considered stage III/IV. The experience at Brookwood also reflects these national data. Within our patient population, 66.5% of patients presented as Stage III or Stage IV and 29.7% presented as Stage I/II. When histology was assessed the most common cell type was papillary serous (N=247), followed by endometrioid (N=127). Of note, there were also 22 cases of mucinous cystadenocarcinoma and 12 cases of clear cell carcinoma. Reflecting a diversity of tumor type, 12 cases of germ cell tumor type were observed and 11 cases of stromal type tumors were diagnosed.

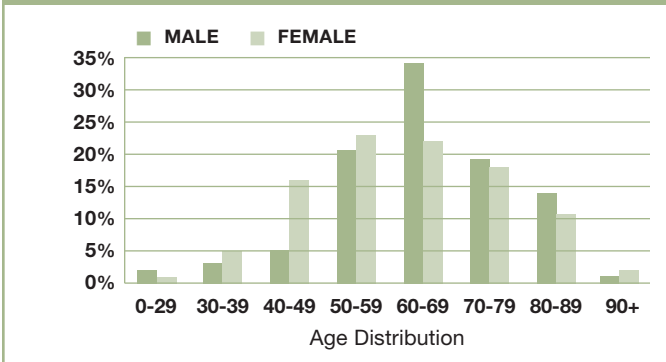
The mainstay therapy since the late 1980s involves surgical resection to allow for precise surgical staging and debulking when indicated. Surgically staged patients with Stage I disease can sometimes avoid chemotherapy. In our population, 126 patients were diagnosed with Stage I tumor where 67% were treated with surgery alone. As noted previously, however, the majority of patient will harbor Stage III/IV disease where the combination of surgery and a platinum/taxane containing chemotherapy regimen is considered to play a major role. 92% of patients with Stage III/IV disease received surgery in our population. In addition, 83% of patients who underwent surgery also received chemotherapy.



FIVE YEAR COMPARISON OF ANALYTIC CASES BY SITE (2004-2008)

Site	2004	2005	2006	2007	2008
Breast	178	226	233	262	263
Corpus Uteri	122	130	116	133	120
Colorectal	87	92	100	90	93
Lung	106	127	97	116	85
Ovary	63	81	69	63	79
Total	992	1,111	1,134	1,211	1,168

DISTRIBUTION BY AGE & SEX (2008)



INCIDENCE BY COUNTY (2004-2008)

County	2004	2005	2006	2007	2008
Jefferson	473	477	539	565	548
Shelby	175	190	200	192	140
Talladega	43	55	65	71	70
Walker	18	24	34	16	39
Calhoun	26	35	18	24	34
Tuscaloosa	18	23	24	30	33
St. Clair	29	36	33	29	32
Chilton	23	29	37	31	28
Montgomery	21	24	26	36	15
Other	294	343	334	365	360
Total	1102	1212	1276	1343	1299

When compared to national statistics, the overall and disease free survival of patients with ovarian cancer are consistent with national statistics. To assess survival in our population, Kaplan Meier curves were established for Stages I-IV over a 60 month period (see chart at left). Stage I patients had an overall survival of 80% at 60 months, while an approximate 85% disease free survival was noted for Stage I/II patients at 60 months.

For Stage III patients an overall survival of 26% was noted at 60 months while the disease free survival this population at 60 months was 38%.

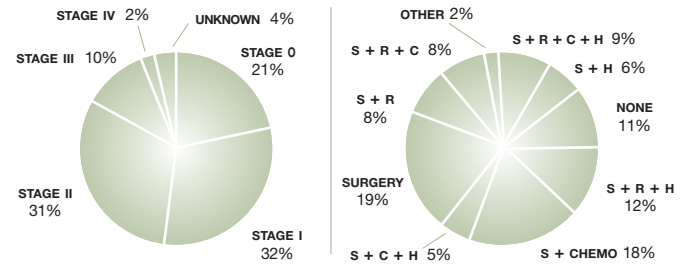
Mack N. Barnes, III, MD

Gynecology/Oncology Representative

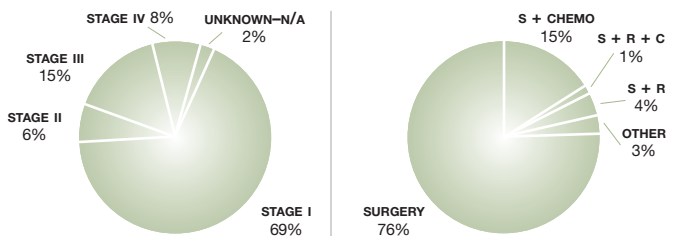
Oncology Performance Improvement Committee

TOP FIVE PRIMARY SITES (2008) CANCER BY STAGE, TREATMENT & COMPARISON

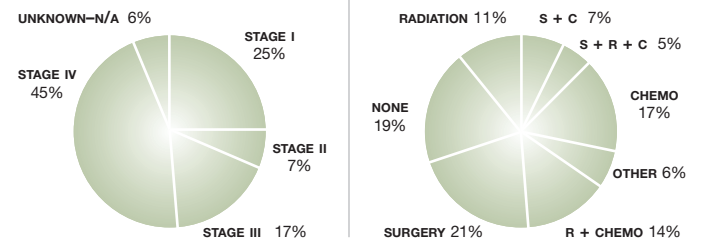
Breast Brookwood = 263 | Alabama = 2,750 | U.S. = 184,450



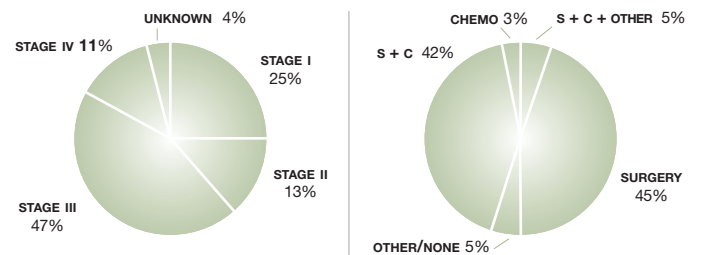
Uterine Corpus Brookwood = 120 | Alabama = 490 | U.S. = 40,100



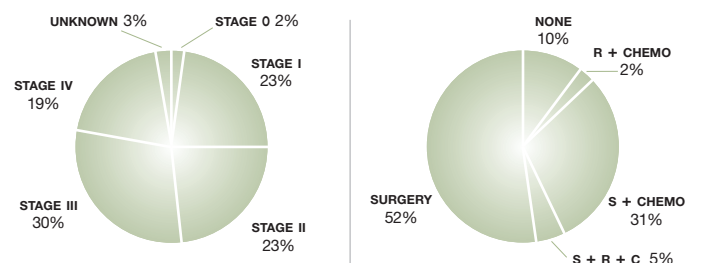
Lung Brookwood = 85 | Alabama = 3,900 | U.S. = 215,020



Ovary Brookwood = 79 | Alabama = n/a | U.S. = 21,650



Colorectal Brookwood = 93 | Alabama = 2,390 | U.S. = 148,810



ONCOLOGY PERFORMANCE IMPROVEMENT COMMITTEE | 2008-2009

CHAIRMAN

J. Christopher Davis, MD
Otolaryngology
Chairman, Oncology
P. I. Committee

PHYSICIAN MEMBERS

Mack N. Barnes, III, MD
Gynecology/Oncology

Luigi Bertoli, MD
Hematology/Oncology

Bradley Dennis, MD
Chief Medical Officer

William DeVos, MD
Pathology

R. Fred Dumas, Jr., MD
Tumor Conference
Coordinator
Radiation/Oncology

Henry Hudson, MD
Urology

April Maddux, MD
General Surgery

Varian Scott, MD
Radiology/Nuclear Medicine

Donald Simmons, MD
Pathology

Edward Sullivan III, MD
Radiology/Nuclear
Medicine

Sandra Tincher, MD
Physician Liaison
Radiation/Oncology

Allen Yeilding, MD
Hematology/Oncology

NON-PHYSICIAN MEMBERS

Ellen Carmichael, CRNP
Quality Improvement
Coordinator

Billy Connelley, Jr., MSHA, RT(T)
Administration

Janet Dees, OCN, MBA
Outreach Coordinator

Judy Smith, RHIA, CTR
Registry Coordinator

Jenni Fisher, BS, CMD, RT(T)
Leadership

Karen Litwiniec, PharmD
Manager, Pharmacy Services

Christy Nation, RN
Director, Women's 3

Cheryl Smith, RN
Director, 7th floor

Tracy Flanagan, RHIT, CTR.
Cancer Registrar

Laura Ann Walley, RN, MSN
Director, Medical Staff/
Performance Improvement

Amanda Ducksworth
Chaplain

Lauren McFall
Dietitian

2008 ONCOLOGY PROGRAM STATISTICS

ONCOLOGY CONFERENCES

Total cases presented	214
Prospective cases presented	204
Percent of Prospective cases	95%
Cancer conferences	46
Average staff attendance	15

CANCER REGISTRY

Total cases	1,299
Analytic cases	1,168
Non-analytic cases	131
Cases in registry since reference date	18,193
Follow-up contacts	8,625
Follow-up rate Reference Year (1993)	87%
Five-Year Follow-up rate	91%
Percent of Cases Evaluated for Quality Control	11%
Number of Analytic Cases Reviewed for Quality Control	131
Accuracy of Collaborative Staging	98%

REFERENCES

Cancer Facts & Figures 2008 | American Cancer Society

Alabama Cancer Facts & Figures 2008 | American Cancer Society & Alabama Statewide Cancer Registry

AJCC Cancer Staging Manual, 6th Edition | American Joint Committee on Cancer | Springer-Verlag | New York, NY 2002

International Classification of Diseases for Oncology, 3rd Edition
World Health Organization | Geneva, Switzerland, 2000

Facility Oncology Registry Data Standards (FORDS) | American College of Surgeons | Commission on Cancer | Chicago, IL, 2007

Collaborative Staging Manual and Coding Instructions | American Joint Commission on Cancer | U.S. Department of Health and Human Services | Bethesda, MD, 2007

SEER Summary Staging Manual 2000 | Cancer Surveillance, Epidemiology and End Results Program | National Institute of Health | National Cancer Institute | Bethesda, MD, 2001

Multiple Primary and Histology Coding Rules | Field Study Manual | National Cancer Institute | Surveillance Epidemiology and End Results Program | Bethesda, MD, 2007

PRIMARY SITE TABLE 2008 ANALYTIC CASES

M = Male F = Female

Unk. = Unknown Stage N/A = Benign cases or cases not staged by AJCC

PRIMARY SITE	TOTAL	SEX		AJCC STAGE AT DX						
		M	F	0	I	II	III	IV	UNK	N/A
Lip	2	1	1	0	0	0	0	1	1	0
Tongue, NOS	2	1	1	0	1	1	0	0	0	0
Floor of Mouth	1	0	1	0	0	0	0	1	0	0
Palate	1	1	1	0	1	0	0	0	0	0
Parotid	1	0	1	0	0	0	0	0	1	0
Tonsil	1	1	0	0	1	0	0	0	0	0
Nasopharynx	1	1	0	0	0	0	0	1	0	0
Esophagus	6	5	1	0	2	0	1	2	1	0
Stomach	11	6	5	0	1	1	1	3	2	3
Small Intestine	8	4	4	0	0	2	1	1	0	4
Colon	79	30	49	2	16	18	24	17	0	2
Rectosigmoid	3	0	3	0	0	1	2	0	0	0
Rectum	11	6	5	0	5	2	2	1	0	1
Anus	5	1	4	0	2	1	2	0	0	0
Liver/Intrahep Bile	6	3	3	0	4	1	0	0	1	0
Gallbladder	1	0	1	0	0	0	0	1	0	0
Other & Unspec Parts of Biliary	3	0	3	0	0	2	0	1	0	0
Pancreas	16	10	6	0	2	3	1	9	1	0
Larynx	2	2	0	0	0	0	1	1	0	0
Bronchus/Lung	85	62	23	0	21	6	14	38	2	4
Thymus	2	2	0	0	0	0	0	0	0	2
Mediastinum, Heart & Pleura	2	2	0	0	0	1	0	0	0	1
Bones, Joints, Art. Cartilage	4	1	3	0	0	0	0	1	2	1
Hematopoietic/Reticuloendothelial	41	18	23	0	0	0	0	2	0	39
Skin	34	25	9	5	13	8	0	3	4	1
Retroperitoneum	8	0	8	0	0	0	0	0	0	8
Conn Subq Tissue	5	1	4	0	1	2	1	0	0	1
Breast	263	0	263	54	84	82	27	5	11	0
Vulva	50	0	50	30	7	7	3	0	3	0
Vagina	6	0	6	5	0	0	0	1	0	0
Cervix	23	0	23	1	10	4	6	0	2	0
Corpus Uteri	120	0	120	0	83	7	18	10	0	2
Uterus NOS	1	0	1	0	0	0	1	0	0	0
Ovary	79	0	79	0	20	10	37	9	2	1
Other Female	1	0	1	0	0	0	0	0	0	1
Prostate	56	56	0	0	0	50	1	5	0	0
Testis	5	5	0	0	4	0	1	0	0	0
Kidney	55	31	24	0	43	3	1	6	1	1
Renal Pelvis	3	1	2	1	1	0	0	1	0	0
Ureter	5	3	2	2	0	0	3	0	0	0
Bladder	30	26	4	14	9	2	1	4	0	0
Eye and Adnexa	1	1	0	0	0	0	0	0	0	1
Brain	22	12	10	0	2	0	0	0	0	20
Meninges	19	4	15	0	0	0	0	0	0	19
Other Central Nervous System	13	8	5	0	0	1	0	0	1	11
Thyroid	21	5	16	0	15	1	2	1	2	0
Other Endocrine	18	9	9	0	0	0	0	0	0	18
Lymph Nodes	21	13	8	0	4	3	5	6	3	0
Unknown Primary	15	9	6	0	0	0	0	0	0	15
TOTAL ANALYTIC	1168	366	802	114	353	219	156	130	40	156



Brookwood
Medical Center

bwmc.com

BROOKWOOD ONCOLOGY SERVICES DIRECTORY

Brookwood Medical Center	205-877-1000
Vice President of Operations	205-877-1893
Brookwood Cancer Care Center	205-877-2273
Manager	205-877-1094
Scheduling Coordinator	205-877-2228
Oncology Nurse Coordinator	205-877-2209
Nurse for Dr. Fred Dumas	205-877-2209
Nurse for Dr. Sandra Tincher	205-877-2217
Oncology Coordinator	205-877-1798
GYN Inpatient Oncology Unit	205-877-5350
Inpatient Oncology Unit	205-877-1700
Nurse Navigator	205-877-1798
Nutritional Support/Oncology Dietitian	205-877-1033
Oncology Chaplain/Counselor	205-877-1936
Ostomy Services	205-877-2582
Outpatient Medical Oncology	205-877-2256
Physician Referral	1-888-Brookwood

ADDITIONAL SUPPORT SERVICES

Alabama Foundation for Oncology	205-877-2225
American Cancer Society	1-800-ACS-2345
Genetic Testing	
Breast, Ovarian and Melanoma Cancer	205-877-1798
Colon Cancer	205-877-1798
Educational services and community outreach	
Camp New Hope	205-877-2224
Camp for children of cancer patients	
Camp Newsong	205-877-2224
Camp for children who have had a family member die	
Cancer Registry	205-877-1383
Hope Lodge	1-888-513-9933
Smoking Cessation	800-QUIT-NOW
Transportation Information	205-877-1798
Women's Diagnostic Center	205-877-5200
Digital mammography, CAD, ultrasound and bone density	

CANCER SUPPORT GROUPS

Bosom Buddies	1-800-ACS-2345
For women with breast cancer	
Gynecologic Cancer	205-975-9523
For women with GYN cancer	
Look Good Feel Better	205-877-1798
Free class on makeup application and hair care during cancer treatment	
Man to Man	1-800-ACS-2345
For men with prostate cancer	
Reach to Recovery	1-800-ACS-2345
Information on exercises for breast surgery recovery, including range of motion exercises for surgical arm	
STRETCH	1-800-ACS-2345
Exercise class designed especially for women following breast surgery	
Together Group	205-877-1936
For patients with any type cancer and loved ones	

Brookwood Medical Center

2010 Brookwood Medical Center Drive
Birmingham, Alabama 35209
(205) 877-1000
bwmc.com